

“Blue Rose Hollow”

REVISED

Designed by Susan McDermott
Featuring the Shenandoah Valley collection by Nancy Gere
Finished Size: 85 x 85”



Check www.windhamfabrics.com Free Project section to see if there are any pattern updates before you start your quilt

WINDHAM FABRICS

812 Jersey Ave ~ Jersey City, NJ 07310 ~ 201.659.0444 ~ FAX: 201.659.9719
www.windhamfabrics.com email: retail@windhamfabrics.com

“Blue Rose Hollow”

Collection images:

Page 2



39531-1 Blue



39531-2 Wine



39532-1 Blue



39532-2 Wine



39532-3 Purple



39533-1 Blue



39533-2 Wine



39533-3 Purple



39534-1 Blue



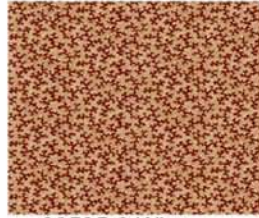
39534-2 Wine



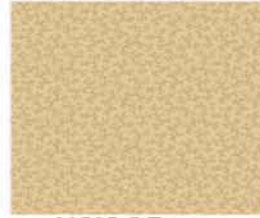
39534-4 Green



39535-1 Blue



39535-2 Wine



39535-5 Tan



39536-1 Blue



39536-2 Wine



39536-3 Purple



39537-1 Blue



39537-5 Tan



39538-1 Blue



39538-2 Wine



39538-3 Purple



39539-1 Blue



39539-2 Wine



39539-4 Green



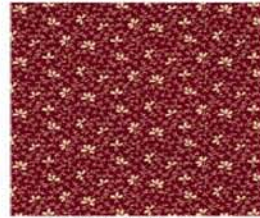
39540-3 Purple



39540-4 Green



39541-1 Blue



39541-2 Wine



39541-5 Tan



39542-1 Blue



39542-2 Wine

“Blue Rose Hollow”

Page 3

Fabric Requirements: Shenandoah Valley by Windham Fabrics

Fat Quarter:

39531-1, 39531-2, 39532-1, 39532-2, 39532-3, 39533-1, 39533-2, 39533-3,
39534-1, 39534-2, 39535-5

Half Yard:

39534-4, 39535-1, 39535-2, 39536-1, 39536-2, 39536-3, 39537-1, 39538-2,
39538-3, 39539-1, 39539-2, 39539-4, 39540-4, 39541-1, 39541-2, 39541-5,
39542-1, 39542-2

5/8 yard:

39540-3

1-1/4 yard:

39537-5

Binding:

5/8 yard 39538-1

Freezer Paper

Center Block:

Enlarge: appliqué pattern 400%. The bottom of the vase will measure 7-1/2”.

Cut: (1) 18-1/2” square 39537-5

Appliqué : vase: 39532-1

Blue rose medallion: 39531-1

Vase trim: 39534-1

Stems: 39534-4

Leaves: 39540-4

Circle flowers: Make (3) hourglass circles following directions below.

Appliqué pieces to background square in the manner of your choosing using the pattern as a guide. Note: the dotted lines indicate where pieces are tucked under another piece.

“Blue Rose Hollow”

Page 4

Border 1:

Cut: **A:** (4) 3-1/2” x 18-1/2” 39540-3

B: (4) 3-1/2” squares 39541-2

Sew an **A** to the left side of the center block. Repeat on the right side. Sew a **B** to each side of an **A**. Attach to the top of quilt center. Repeat for the bottom.

Small Hourglass Blocks:

Cut: (64) 4-1/2” squares, mixing lights with darks. Cut on both diagonals to form (256) quarter-square triangles.

Sew (4) triangles together to form an hourglass block. The block measures 3-1/2”, unfinished. Make (64) blocks.

**Note: Blocks will need to be trimmed to be 3 1/2” exactly.

Large Hourglass Blocks:

Cut: (167) 7-1/2” squares, mixing prints. Cut on both diagonals to form 668 quarter-square triangles.

Sew four triangles together to form an hourglass block. Block measures 6-1/2”, unfinished. **Note: Blocks will need to be trimmed to 6 1/2” exactly.

Make (167) blocks:

(60) with the lightest tans in two triangles of the block, for the inner section of the quilt.

(92) with darker lights in two triangles of the block, for the outer blocks.

(3) for the appliqué flowers.

(12) for the circle blocks.

Hourglass Circle Blocks:

Need: (15) Hourglass Blocks

Cut: (12) 6-1/2” squares 39537-5

Hourglass Circles:

Cut (15) 4” circles from freezer paper. Fold a freezer paper circle in half, finger press. Fold again, finger press. Open circle. Fuse the freezer paper circle to an hourglass block, shiny side towards the wrong side of the block, matching the fold lines with the seam lines to assure that the circle is in the center of the hourglass block. Trim background fabric to 1/4” seam allowance around the circle.

Baste the seam allowance over to the back of the circle pattern.

“Blue Rose Hollow”

Page 5

Cont.

Make (15) hourglass circles. (3) are for the appliqué flowers and (12) are for the Hourglass Circle Blocks.

To complete the Hourglass Circle Blocks:

Fold a 6-1/2” background square on the diagonal and finger press the fold. Repeat on the opposite diagonal. Match the circle seam lines with the diagonal folds on the background square. Appliqué. Cut away the background fabric on the back of the block leaving 1/4” seam allowance. Remove basting stitches on front and then pull away the freezer paper on the back.

Make (12) blocks.

Quilt Top Assembly:

Lay out the Small Hourglass Blocks, Large Hourglass Blocks and Circle Hourglass Blocks around the quilt center, using the quilt photo as a guide.

Note: the (64) lighter Large Hourglass Blocks surround the center of the quilt.

First sew four Small Hourglass Blocks together to form 6-1/2” blocks. There will be (16) of these blocks. Now all the blocks measure 6-1/2”, unfinished.

Sew the 5 rows of 5 blocks each that are to the left of the center quilt block and then attach to the quilt center. Repeat on the right side.

At the top of the quilt, sew the 4 rows of 14 blocks together and then attach to the center section of the quilt. Repeat for the bottom section.

Layer, quilt and bind.

**Always look on our website before starting your project to see
if there are any updates or corrections**

**Be sure to visit www.windhamfabrics.com to see the complete collection
and to download other Free Projects**

Applique Pattern

